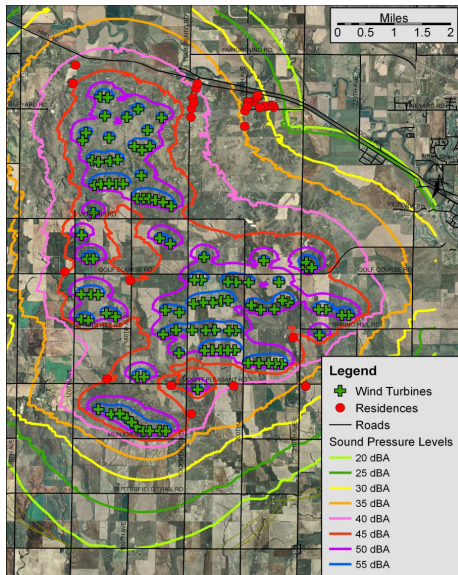


NOISE CONTROL ENGINEERING: ENVIRONMENTAL NOISE



Propagation sound modeling yields insights into overall impacts at the Ellis County Wind Farm.

Monitoring noise impacts from a wind farm

CHALLENGE

The Ellis County (Kansas) Wind project proposed to construct and operate up to 101 2.0-MW wind turbines. Although the project is in an area dominated by rural farmland, the project developer wanted to assess the noise impacts of the project on non-participating landowners.

INITIATIVE

To assess the impacts of the project on noise levels in the surrounding area, RSG:

- Conducted background sound-level monitoring at representative areas around the site
- Performed a calibration study at a similar nearby wind farm in Spearville, Kansas, to assess the appropriateness of various sound propagation modeling parameters
- Performed sound propagation modeling

RESULTS

RSG issued its findings in a report that was presented at public hearings.

Contact Information

For more information about this project, contact:

Mr. Ken Kaliski
Director
kkaliski@rsginc.com
888.292.9639

